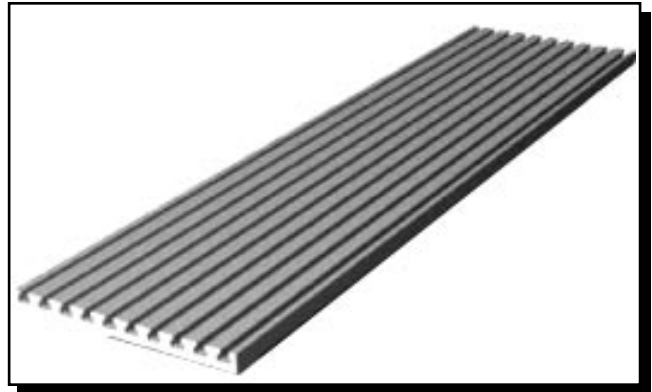


PT Series T-slot Base Plates

FEATURES

- For use with Magtrol Dynamometers or Torque Transducers
- Universal precision, clamping and working surface
- Constructed of anodized aluminum
- Made according to EN 12020-2
- Face-milled on both sides
- Includes a set of countersunk mounting holes
- Thick-walled, resistant to warping and extremely solid
- Available in lengths from 400 mm to 1500 mm



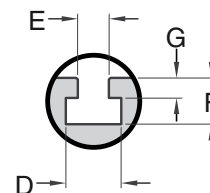
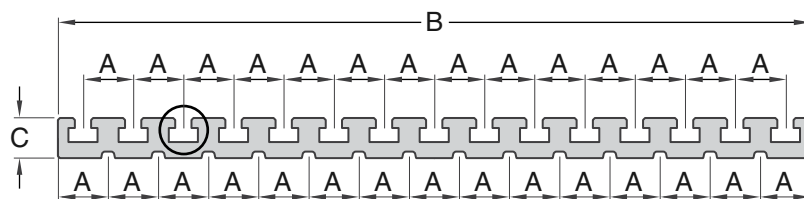
DESCRIPTION

PT Series T-slot Base Plates are used for creating a basic test rig by mounting a Magtrol Dynamometer and/or Torque Transducer in line with the unit to be tested. Its solid, warp-resistant structure and multiple, single-sided T-slots enable modular construction that is cost-effective and easy to assemble.

ORDERING INFORMATION

PT Series Base Plates are available in lengths from 400 mm to 1500 mm, in 100 mm increments. The length designates the model number. For example, a base plate that is 800 mm in length is a PT-800.

DIMENSIONS



	mm	in
A	25.0	0.984
B	375.0	14.764
C	20.0	0.787
D	14.5	0.571
E	8.0	0.315
F	12.0	0.472
G	5.0	0.197

NOTE:

Original dimensions are in Metric units. Dimensions converted to English have been rounded to 3 decimal places.

Due to the continual development of our products, we reserve the right to modify specifications without forewarning.



www.magtrol.com

MAGTROL INC

70 Gardenville Parkway
Buffalo, New York 14224 USA
Phone: +1 716 668 5555
Fax: +1 716 668 8705
E-mail: magtrol@magtrol.com

MAGTROL SA

Centre technologique Montena
1728 Rossens/Fribourg, Switzerland
Phone: +41 (0)26 407 3000
Fax: +41 (0)26 407 3001
E-mail: magtrol@magtrol.ch

Subsidiaries in:

- Germany
 - France
 - Great Britain
 - China
- Worldwide Network
of Sales Agents

