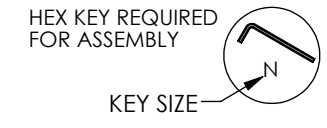
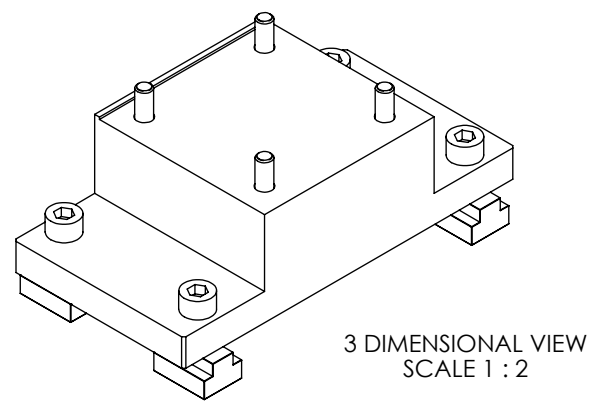
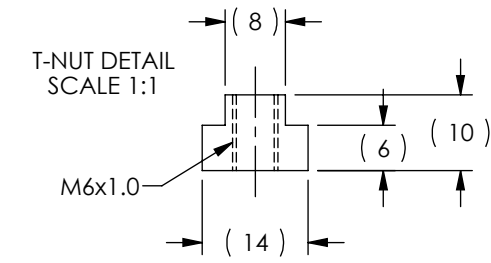
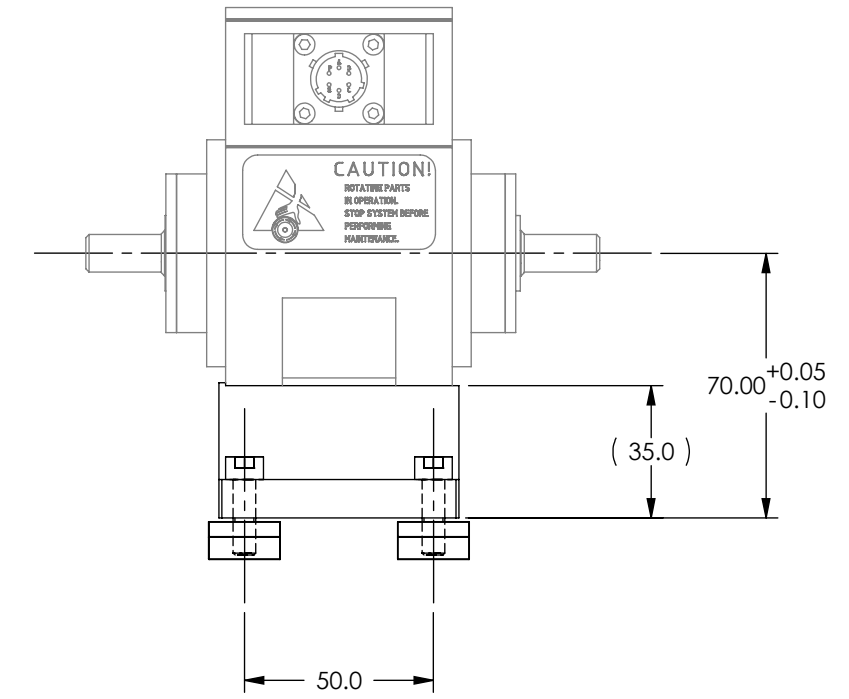
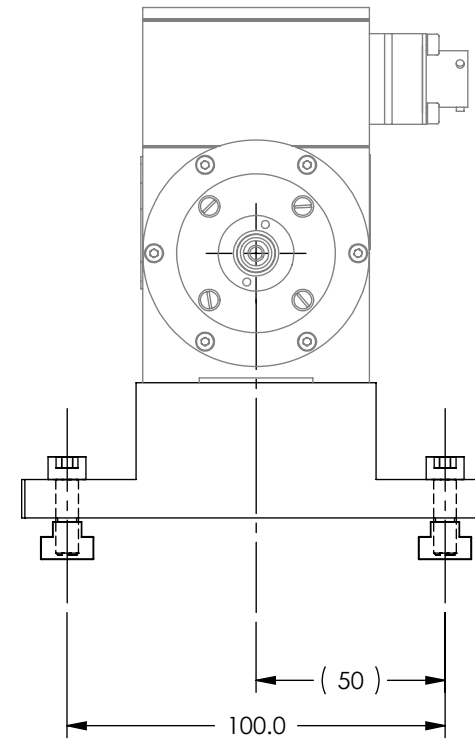
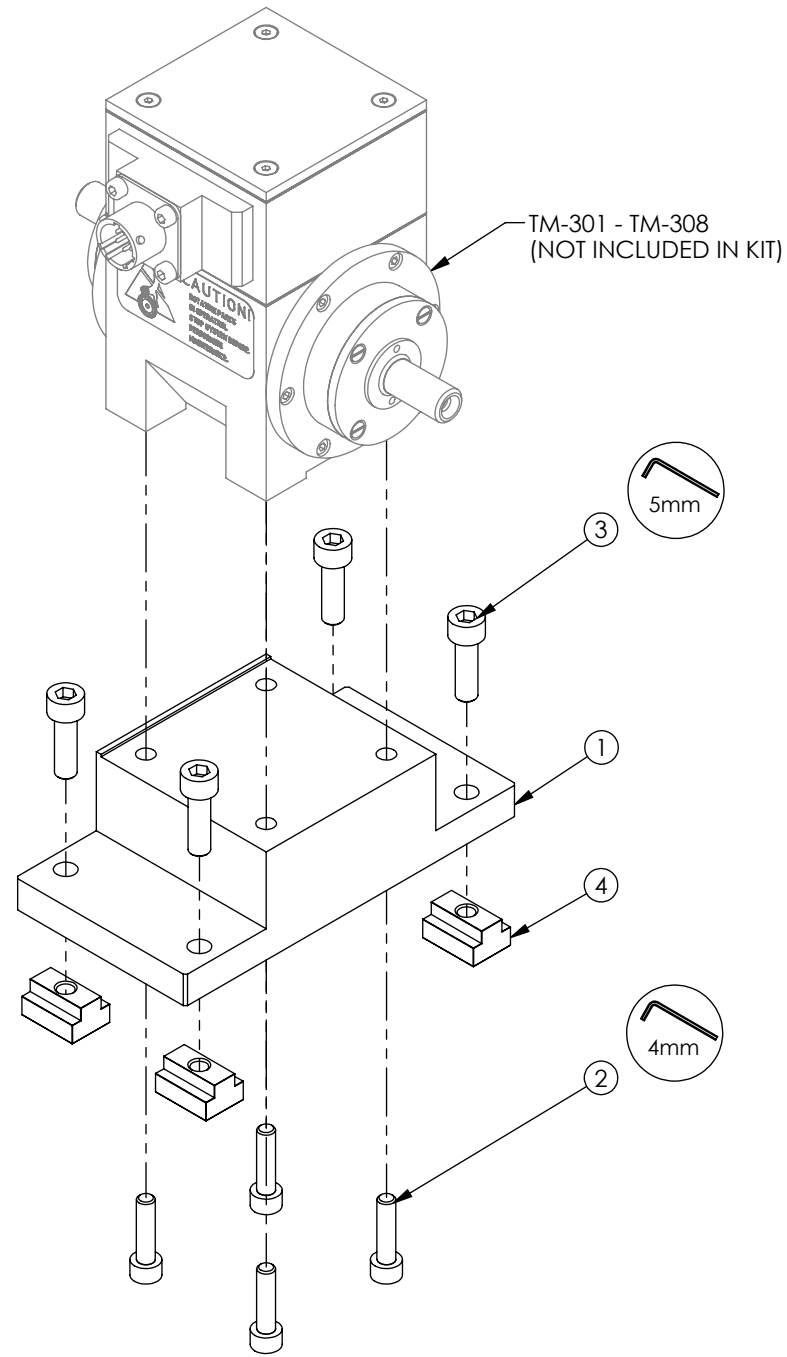

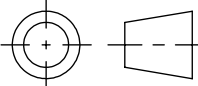


SOLID MODEL AVAILABLE

| ITEM NO. | PART NUMBER | DESCRIPTION                    | QTY. |
|----------|-------------|--------------------------------|------|
| 1        | 205452      | RISER BLOCK, RTM-1-070         | 1    |
| 2        | 504215      | T-NUT, M6x1.0 X 8mm SLOT WIDTH | 4    |
| 3        | 504253      | SHCS M5x0.8 X 20mm 18-8 SS     | 4    |
| 4        | 505677      | SHCS M6x1 X 20mm 18-8 SS       | 4    |



STOCK CODE: 005794  
RISER KIT DESIGNED FOR AHB-1.75 AND PT SERIES, T-SLOT BASE PLATES

|   |   |            |                 |  |
|---|---|------------|-----------------|--|
| MATERIAL:   | DESIGN  | JEF        | 08/07/06        |  <b>MAGTROL INC.</b><br>70 GARDENVILLE PKWY, W.<br>BUFFALO, NEW YORK 14224-1322 |
|   | DRAWN   | JEF        | 05/22/08        |  |
| FINISH:   | CHECKED   | DTW        | 05/22/08        |  |
| THIRD ANGLE PROJECTION  |    |            |                 | TITLE  |
| THIS DRAWING AND SPECIFICATION CONTAINS PROPRIETARY INFORMATION TO MAGTROL INC. ANY DISCLOSURE OR REPRODUCTION OF THIS DOCUMENT WITHOUT WRITTEN AUTHORIZATION FROM MAGTROL INC. IS EXPRESSLY PROHIBITED | UNLESS OTHERWISE SPECIFIED:<br>DIMENSIONS ARE IN MILLIMETERS,<br>DIAMETERS CONCENTRIC: .08 TIR,<br>FACES PERPENDICULAR: .08<br>INTERPRETATION PER ASME<br>Y14.5M-1994<br>REMOVE ALL BURRS AND BREAK<br>SHARP EDGES .13/.25 X 45°, ALL<br>INSIDE CORNERS TO BE .5 R MAX.<br>TOLERANCES:<br>X ± .4                    .XX ± .13<br>.X ± .25                ANG. ± 1°<br>SURFACE FINISH 3.2 μm MAX. U.O.S. |            |                 | RTM-1-070 RISER KIT  |
|   |   |            |                 | USED ON: -<br>SIMILAR TO: -<br>DWG. NO.  |
|   |   |            |                 | <b>RTM-1-070</b>   |
|   |   |            | REV<br><b>B</b> |  |
| SIZE  |   | SCALE      | SHEET #         |  |
| <b>B</b>  |   | <b>1:2</b> | <b>2 OF 2</b>   |  |