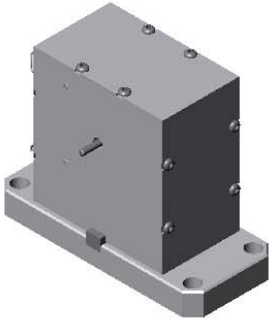
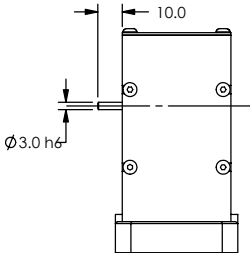
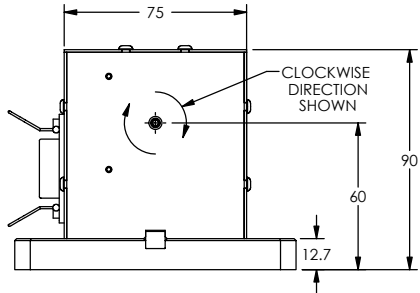
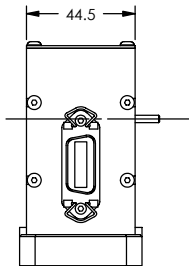
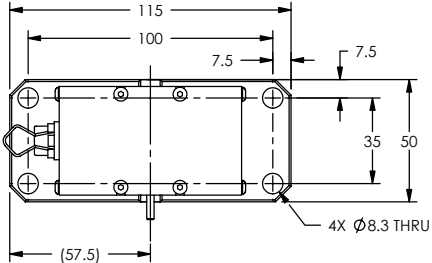
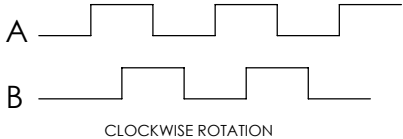



SOLID MODEL AVAILABLE

MODEL	MAXIMUM SPEED (rpm)	PULSE COUNT (ppr)	MAXIMUM DRAG TORQUE @ 1000 rpm (mNm)	INERTIA (kg m ²)	ELECTRICAL CONNECTIONS	
					OUTPUT FUNCTION	PIN # - 14 PIN CONNECTOR
89E007	35,000	60	0.056	4.266 X 10 ⁻⁷	COM	8
					+5V	7
					A	10
					B	2



3 DIMENSIONAL VIEW
SCALE 1 : 2

NOTE: DIMENSIONS ARE IN MILLIMETERS

MATERIAL:	DESIGN	AJC	05/31/06	 MAGTROL INC. 70 GARDENVILLE PKWY., W. BUFFALO, NEW YORK 14224-1322		
	DRAWN	AJC	05/31/06			
FINISH:	CHECKED	DTW	05/31/06	TITLE	EN-0060, ENCODER, 60 BIT, LOW INERTIA	
	UNLESS OTHERWISE SPECIFIED: DIMENSIONS ARE IN MILLIMETERS. DIAMETERS CONCENTRIC: .08 TIR. FACES PERPENDICULAR: .08 INTERPRETATION PER ASME Y14.5M-1994 REMOVE ALL BURRS AND BREAK SHARP EDGES .13/.25 X 45°. ALL INSIDE CORNERS TO BE .5 R MAX. TOLERANCES: X ± .4 .XX ± .13 X ± .25 ANG. ± 1° SURFACE FINISH 3.2 µm MAX. U.O.S.			DWG. NO.	89E007	
THIRD ANGLE PROJECTION			THIS DRAWING AND SPECIFICATION CONTAINS PROPRIETARY INFORMATION TO MAGTROL INC. ANY DISCLOSURE OR REPRODUCTION OF THIS DOCUMENT WITHOUT WRITTEN AUTHORIZATION FROM MAGTROL INC. IS EXPRESSLY PROHIBITED		REV	-
SIZE		SCALE	SHEET #			
B		1:2	2 OF 2			